

TECHNICAL DATA SHEET

1. TRADE NAME: **POPILLIA TRAP**

Trap for the monitoring and the capture of *Popillia japonica* to be used in association with the pheromone-based sexual attractant and the floral attractant (to be purchased separately).

Monitoring device that must be applied to detect regularly the pests' presence in a specific agricultural environment for a defined time.

2. PRODUCT CODE: **P-25023INF**

3. PICTURE:



4. TECHNICAL SPECIFICATIONS:

Popillia trap is the specific trap for the monitoring and the mass trapping of the Japanese beetle (*Popillia japonica*). The trap must be activated with the pair of specific dispensers to be purchased separately.

The association of the pheromone-based sexual attractant with the floral attractant allows the trap to catch both male and female adults. The trap is designed to be selective and prevent the capture of beneficial insects.

It is composed of:

- 1 net bag to collect insects. The collection net can be washed and reused.
- 1 funnel (2 pieces to assemble)
- 1 support (2 pieces to assemble) for the blister

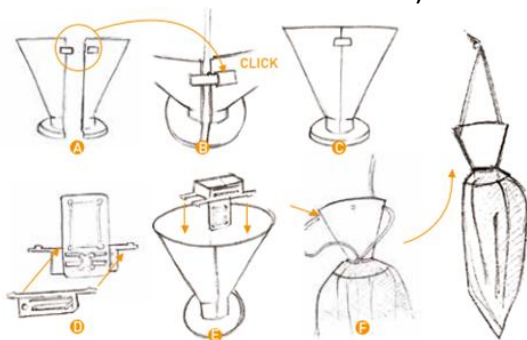
Colour: As in the picture

InFarm PHERO LINE ISAGRO products could undergo necessary or opportune technical changes, at any given time, without prior written notice to customers.

TECHNICAL DATA SHEET

5. HOW TO USE:

Assemble the trap as shown in the picture below. Install the device with the Dispenser *Popillia japonica* (pheromone + attractant in blister).



A, B, C. Join the two pieces of the funnel.

D. Join the two pieces of the dispenser support while inserting the blister (sold separately).

E. Place the dispenser support in the funnel.

F. Attach the collecting bag to the cone using the proper closure cord.

It is suggested to hang the trap activated with the pair of dispensers to be purchased separately, at minimum 1 meter height and at minimum 10 meters away from the cultures.

For mass trapping, place 15-20 traps per hectare. For monitoring, it is suggested to place 1-3 traps per hectare.

Empty the bag once filled for 2/3, cleaning the funnel to avoid obstruction of the trap. The collection net can be washed and reused. Change the dispensers after 8-10 weeks.

We suggest you to give a number to each trap and indicate its placement in the monitored area plan, in order to facilitate the check during the periodic monitoring.

Suggested monitoring period: especially in the period between May and August.

Suggested frequency of the controls: weekly or more frequently according to the pest infestation level.

6. PACKAGING AND SPARE PARTS:

- *Packaging:*
Popillia trap (P-25023INF): 1 trap. Dispensers not included.
- *Spare parts:*
Dispenser *Popillia japonica* (P-25014INFPOPIJAB): 3 blisters (pheromone + attractant)

7. DISPOSAL CONSIDERATIONS:

Waste disposal should be in accordance with existing Community, National and local regulations.